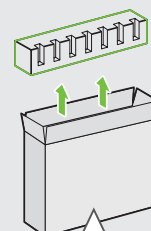
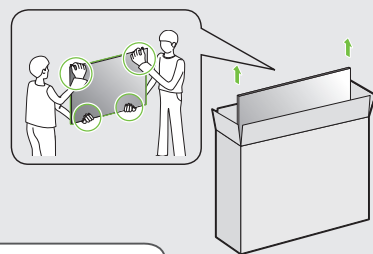


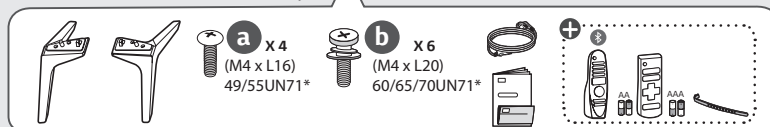
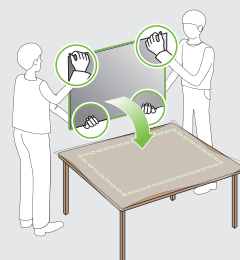
1
49/55UN71*



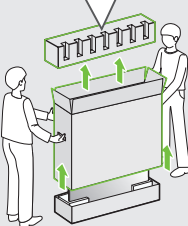
2



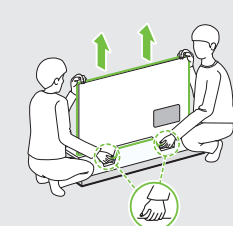
3



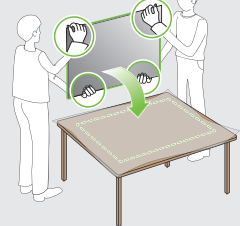
1
60/65/70UN71*



2



3

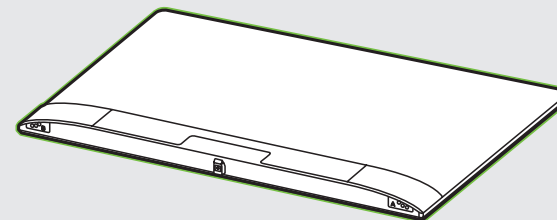


- English • Read Safety and Reference.
- Русский • Прочтите Руководство по технике безопасности.
- Українська • Прочитайте "Правила безпеки та довідкова інформація".
- Қазақша • Қауіпсіздік нұсқаулығын оқыңыз.
- O'zbekcha • Xavfsizlik bo'yicha ko'rsatmalar va havolalar'ni o'qib chiqing.
- Монгол • Аюулгүй ажиллагааны зааварчилгааг уншина уу.

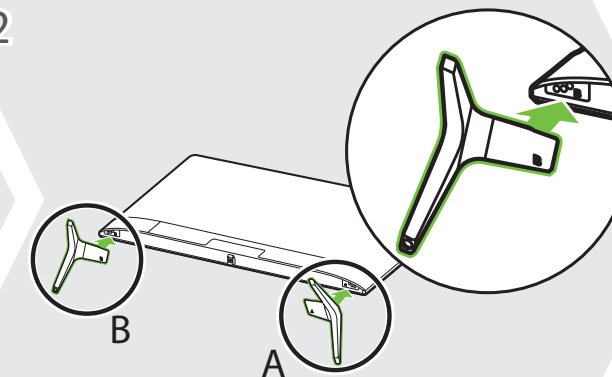
+ : Depending on model / В зависимости от модели / Залежно від моделі / Үлгіге байланысты / Rusumiga qarab / Загвараас хамаарна



1



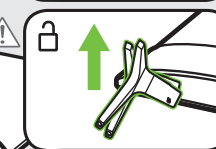
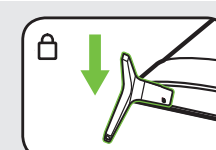
2



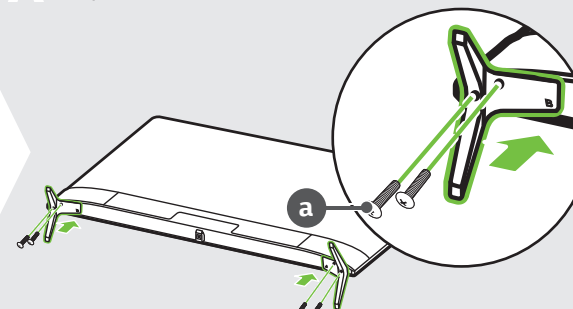
3-A 49/55/60/65UN71*



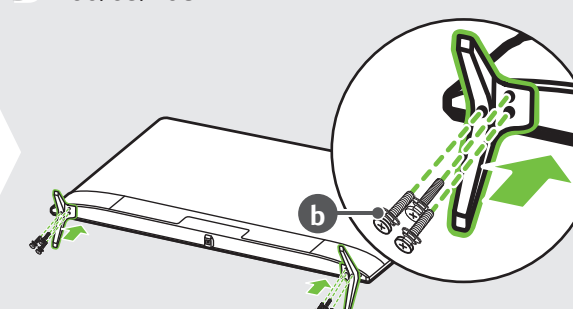
3-B 70UN71*



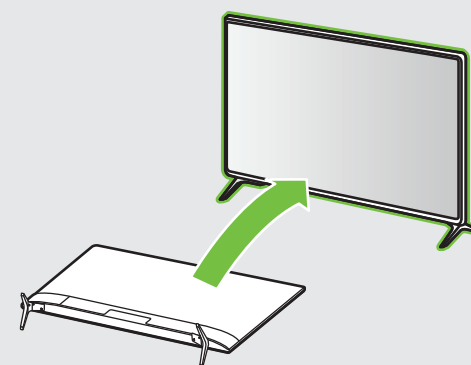
4-A 49/55UN71*



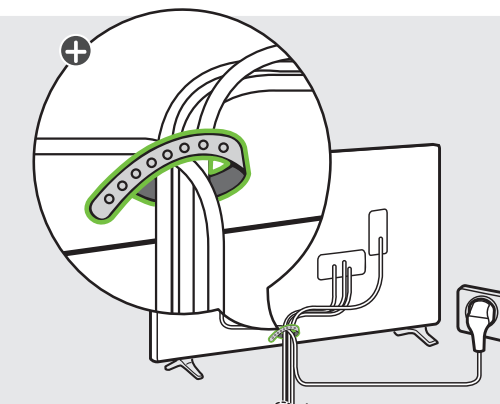
4-B 60/65/70UN71*

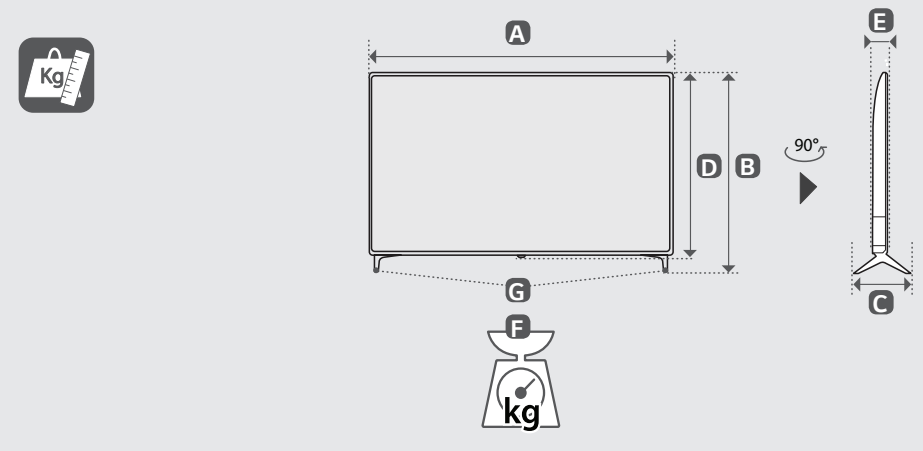
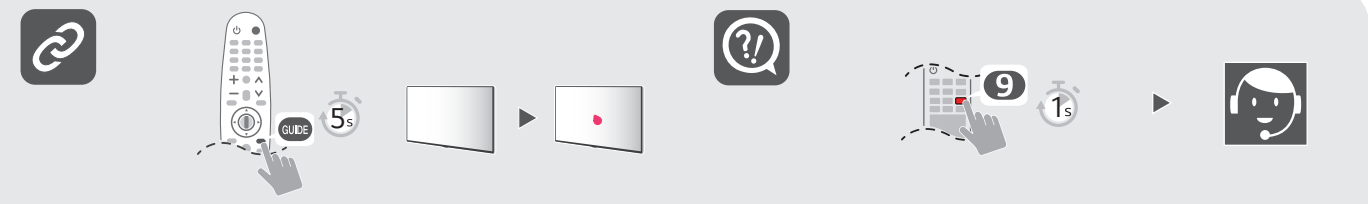
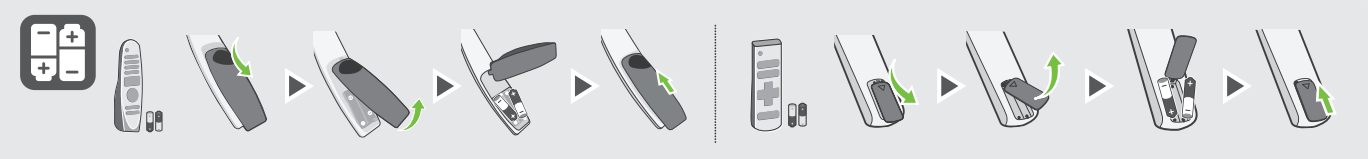
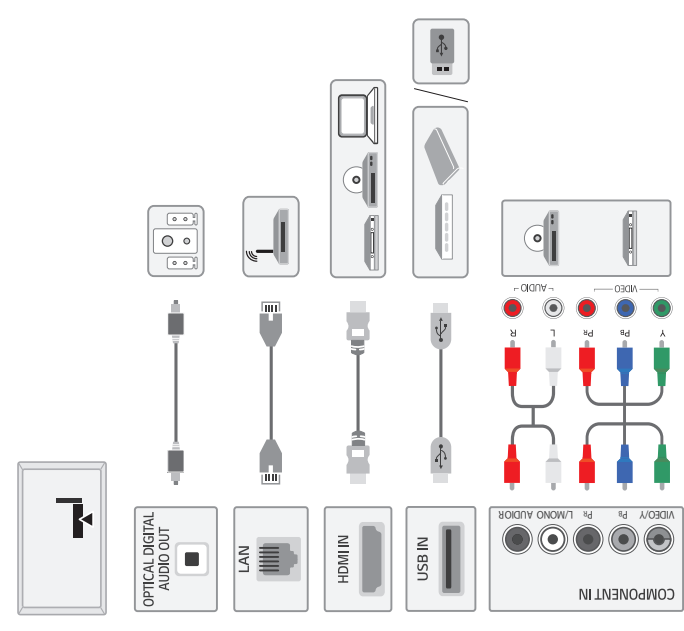
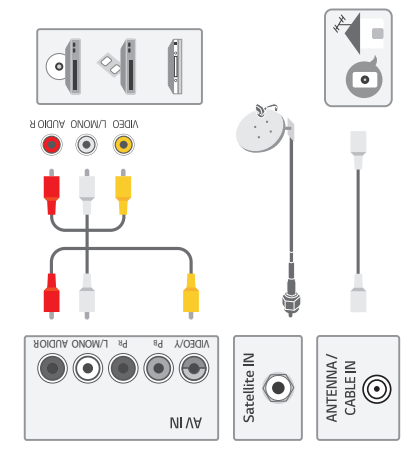
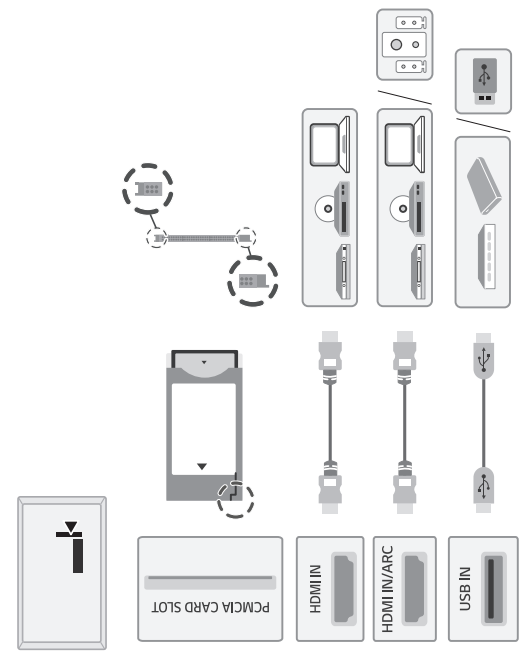


5



6





	A	B	C	D	E	F	F-G	
	(mm)						(kg)	
49UN71006LB 49UN71003LB	1108	708	231	649	79.5	11.1	10.9	
55UN71006LB 55UN71003LB	1247	787	231	728	88.3	13.9	13.7	
60UN71006LB 60UN71003LB	1368	862	269	796	89.1	19.8	19.4	
65UN71006LB 65UN71003LB	1468	917	269	854	89.9	21.4	21.0	
70UN71006LA 70UN71003LA	1578	984	299	913	91.1	31.4	30.7	
Требования к электропитанию Вимоги до електроживлення Електричні шарттары						AC 100-240 V ~ 50 / 60 Hz		